



STATE OF WYOMING CORNER RECORD

(In compliance with the CORNER PERPETUATION AND FILING ACT, Wyoming Statutes, 1997 Section 33-29-140, et. seq., and the Rules and Regulations of the Board of Registrations for Professional Engineers and Professional Land Surveyors)

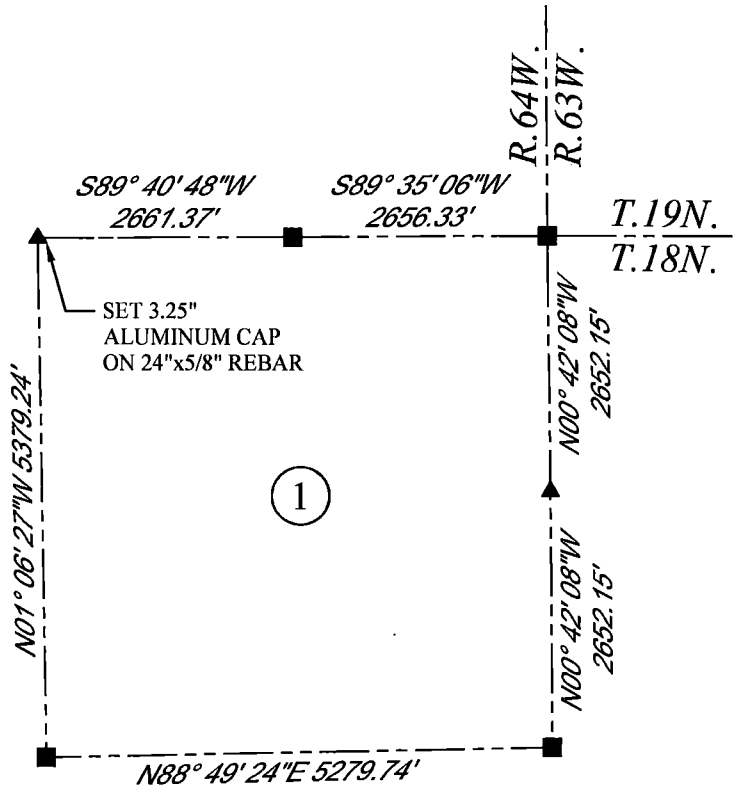
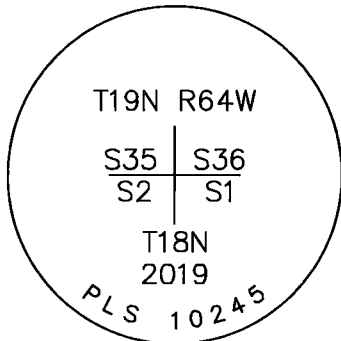
NORTHWEST CORNER SECTION 1, T. 18 N., R. 64 W., 6TH P.M., LARAMIE COUNTY, WYOMING

GLO: SET A GRANITE STONE 18X12X7, 12 IN. DEEP WITH MARKS ON THE WEST AND ONE ON THE EAST SIDE FOR CORNER TO SECTIONS 1,2,35,36..
FOUND: NOTHING
SET: AN ALUMINUM CAP AT PROPORTIONATE (SINGLE) DISTANCE.



SCALE: NONE
 NORTH DETERMINED BY
 G.P.S OBSERVATIONS

SET A 3.25" ALUMINUM CAP ON REBAR STAMPED AS SHOWN. SET 2 MAG NAILS IN FENCE POSTS APPROXIMATELY 49' SOUTHEASTERLY AND 31' SOUTHERLY.



LEGEND:

- FOUND BLM CAP
- FOUND USFS CAP
- FOUND STONE
- FOUND PRIVATE MONUMENT
- ◆ CALCULATED POSITION
- ▲ SET MONUMENT (LS10245)
- SECTION LINE

DATE OF FIELD WORK: 4/18/2019 OFFICE REFERENCE: MERIDEN

CROSS INDEX DIAGRAM

	1	2	3	4	5	6	7	8	9	10	11	12	13	14	15	16	17	18	19	20	21	22	23	24	25
A																									
B																									
C		6																							
D			5																						
E				4																					
F					3																				
G			7																						
H				8																					
J					9																				
K						10																			
L			18																						
M				17																					
N					16																				
O						15																			
P			19																						
Q				20																					
R					21																				
S						22																			
T			30																						
U				29																					
V					28																				
W						27																			
X			31																						
Y				32																					
Z					33																				
	1	2	3	4	5	6	7	8	9	10	11	12	13	14	15	16	17	18	19	20	21	22	23	24	25

WOOD
 2615 AVIATION DRIVE
 SHERIDAN, WY 82801
 PH: 307-675-6400



THIS CORNER RECORD WAS PREPARED BY ME OR UNDER MY DIRECTION AND SUPERVISION, SEAL AND SIGNATURE

